

STATEMENT OF HERITAGE IMPACT

PROPOSED CHILD CARE CENTRE AT
69-73 GEORGE STREET, MARULAN



Report to
Creative Drafting Services

BCN Heritage

08 March 2024

Statement of Heritage Impact – 26 Station Street, Menangle

Document Control

Telephone:	+61 413 124 032	Project Name	Proposed Childcare Centre
Email:	gary@bcnheritage.com.au	Project Reference	23MAR11
Web:	www.bcnheritage.com.au	Client	Creative Drafting Services

Document Status

Version	Author	Date
V1: Draft	Gary Estcourt	07 March 2024
V2: Final	Gary Estcourt	08 March 2024

Contents

1	Introduction	1
1.1	Background	1
1.2	Scope.....	1
1.3	Author Identification.....	1
1.4	Methodology.....	1
1.5	Study Area	1
2	Site History.....	6
2.1	Urban Context.....	6
2.2	Old Marulan	9
2.3	Coming of the Railways.....	11
2.4	The Site	12
3	Legislation	15
3.1	Commonwealth Heritage Controls	15
3.1.1	EPBC Act.....	15
3.2	State Heritage Controls.....	15
3.2.1	Heritage Act 1977	15
3.2.2	National Parks and Wildlife Act 1974.....	15
3.3	Local Heritage Controls.....	15
3.3.1	Goulburn Mulwarree Local Environmental Plan 2009.....	15
3.3.2	Goulburn Mulwaree Development Control Plan 2009	16
4	Heritage Significance.....	17
4.1	Assessing Heritage Significance	17
4.2	Established Heritage Significance of Items in the Vicinity of Lot 1 DP 1268661	17
4.2.1	Heritage Items in the Vicinity.....	17
4.2.2	Royal Hotel (I567).....	18
4.2.3	Aunty May’s/Mary’s (I568)	18
4.2.4	Victorian Shop and Residence (I569)	18
5	Proposal	19
6	Assessments of Impacts.....	23
6.1	Assessment against heritage controls	23
6.1.1	EPBC Act 1999	23
6.1.2	Heritage Act 1977	23

Statement of Heritage Impact – 69-73 George Street, Marulan

6.1.3	National Parks and Wildlife Act 1974.....	23
6.1.4	Goulburn Mulwaree Local Environmental Plan 2009	23
6.1.5	Goulburn Mulwaree Development Control Plan 2009	24
6.2	Goulburn Mulwaree Council Concerns	27
6.3	Assessment of Heritage Significance	27
7	Summary and Recommendations.....	28
8	References	29
	Appendix A.....	30
	Appendix B	33
	Appendix C	42
	Figure 1: Location of study area (SIX Viewer LPI)	2
	Figure 2: 69-73 George Street, Marulan outlined in red (SIX Viewer LPI)	2
	Figure 3: Google Earth image from February 2024 showing site after construction of IGA	3
	Figure 4: Map of heritage items provided by Goulburn Mulwaree Council Heritage Officer	3
	Figure 5: View of site from George Street, with heritage item I569 in the foreground	4
	Figure 6: View looking east across site from gravel carpark behind heritage item I569.....	4
	Figure 7: Rear portion of site. The building on the right of the picture is the rear of the IGA.....	5
	Figure 8: View looking northeast from Goulburn Street	6
	Figure 9: View from Thoroughfare Street.....	6
	Figure 10: View looking directly across George Street	7
	Figure 11: View looking southeast from George Street.....	7
	Figure 12: View into site down northern side of 75 George Street.....	8
	Figure 13: View from site looking south to IGA carpark	8
	Figure 14: General plan of roads southward from Sydney 1829	9
	Figure 15: Plan of farms for sale near Marulan (1857) (NLA)	10
	Figure 16: Village of Marulan, 1902 (HLRV)	10
	Figure 17: 1888 plan of Marulan subject site outlined in red (HLRV).....	12
	Figure 18: 1910 picture of Feltham and Sons Marulan Butchery (NLA)	13
	Figure 19: Photograph showing addition of 1930s residence	13
	Figure 20: Google Earth image from 2018 showing extensive disturbance of the site.....	14
	Figure 21: Map showing Heritage Items I567, I568 and I569	18
	Figure 22: Lot 1 DP 1268661 (SIX Viewer LPI).....	19
	Figure 23: Proposed site plan	20
	Figure 24: Proposed elevation	21
	Figure 25: Proposed playground set out.....	22
	Figure 26: View from site towards royal Hotel	23
	Figure 27: View from George Street showing site of proposed development	24
	Figure 28: Google Earth image from 2018.....	25
	Figure 29: Area of potential for Aboriginal artefacts.....	26

1 Introduction

1.1 Background

BCN Heritage was commissioned by Creative Drafting Services to prepare a Statement of Heritage Impact for a proposed childcare centre at 69-73 George Street, Marulan. The area of 69-73 George Street that will be impacted is located immediately to the rear of 75 George Street. Both 73 and 75 George Street are listed as heritage items in the *Goulburn Mulwaree Local Environmental Plan 2009* (items I568 and I569 respectively). The area of impact is not included within these heritage listings.

Goulburn Mulwaree Council has advised that as the site is within close proximity to a number of heritage items, a Statement of Heritage impact is required to assess the potential heritage impacts and also identify the potential for disturbance of any archaeological relics at the site.

The aim of this study is to assess the impacts of the proposed development on the adjacent items of heritage significance, outline opportunities and constraints on the proposed development and recommend if further action is required to fulfil statutory heritage obligations.

1.2 Scope

This report considers the impacts of the proposed development against the heritage significance of the site. It does not include any assessment of Aboriginal archaeological resources.

1.3 Author Identification

This report was researched and written by Gary Estcourt of BCN Heritage. Field investigation was undertaken by Lisa and Darren Anderson.

1.4 Methodology

The report has been prepared in accordance with the principles and guidelines contained in the following documents:

- Australia ICOMOS Burra Charter.
- *Assessing Heritage Significance*. NSW Heritage Office.
- *Assessing Significance for Historical Archaeological Sites and 'Relics'*. NSW Heritage Branch, Department of Planning.
- Any other relevant documents or guidelines.

1.5 Study Area

The study area is located at, 69-73 George Street, Marulan, NSW. The legal property description is Lot 1 in Deposited Plan 1268661. The site is in the Goulburn Mulwaree Local Government Area. The site is adjacent the following locally listed heritage items in the *Goulburn Mulwaree Local Environmental Plan 2009*:

- Royal Hotel, 65-67 George Street Marulan, I567.
- Victorian Shop "Aunty Mary's", 69-73 George Street Marulan, I568.
- Victorian Shop and Residence, 75 George Street Marulan, I569.

The site is zoned E2 – Local Centre (Figures 1 to 4).

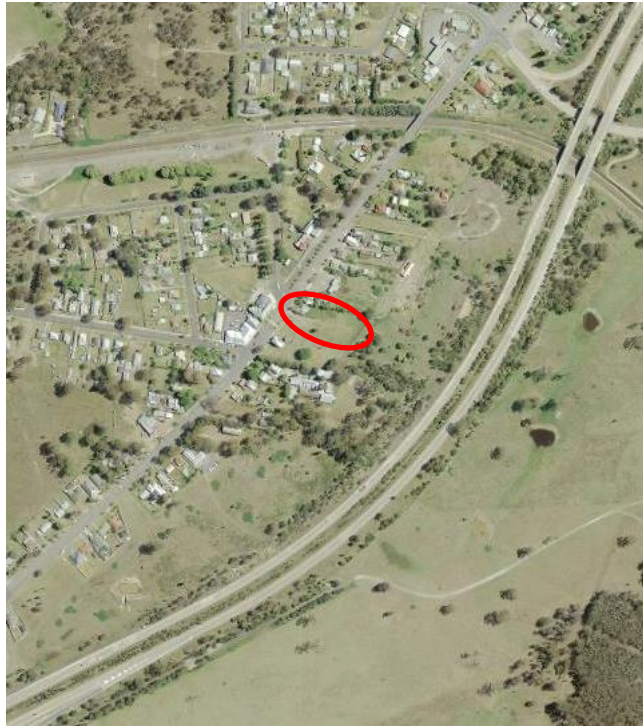


Figure 1: Location of study area (SIX Viewer LPI)



Figure 2: 69-73 George Street, Marulan outlined in red (SIX Viewer LPI)

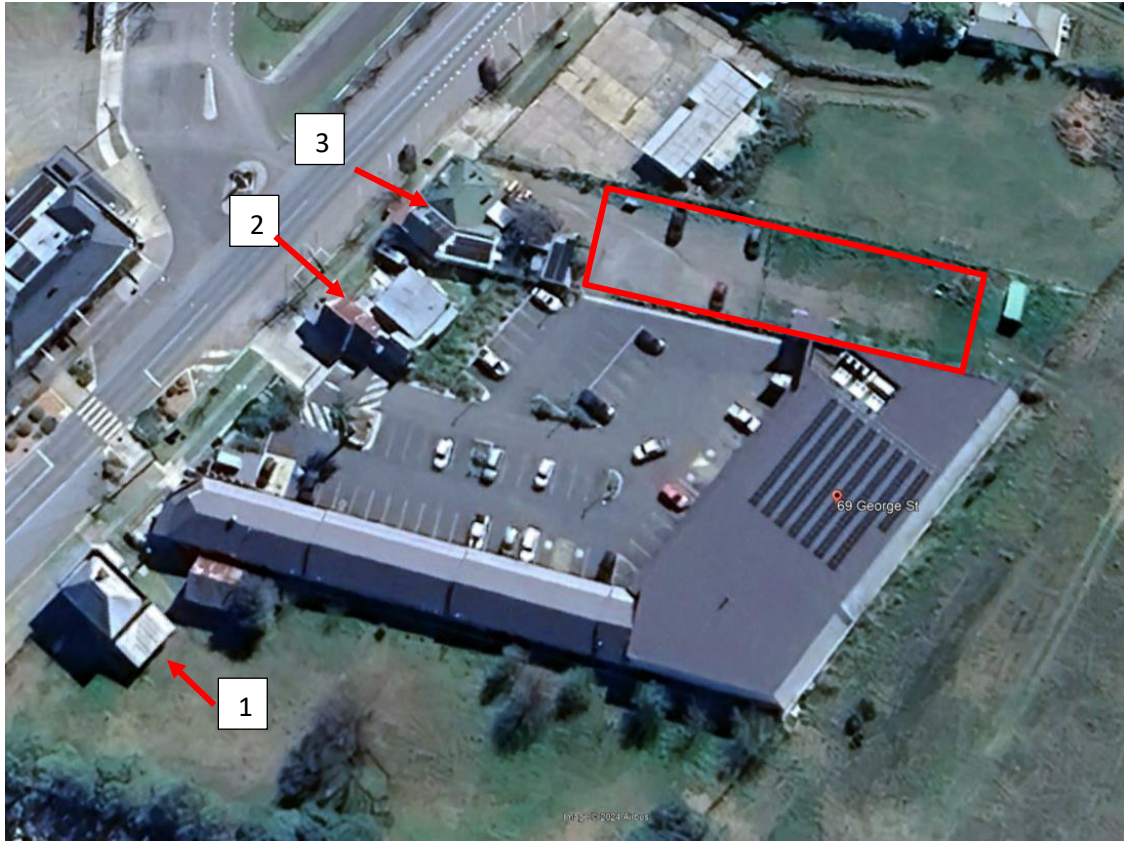


Figure 3: Google Earth image from February 2024 showing site after construction of IGA supermarket in 2019. The approximate works area is indicated by the red rectangle. (1) Heritage Item I567, (2) Heritage Item I568, (3) Heritage Item I569



Figure 4: Map of heritage items provided by Goulburn Mulwaree Council Heritage Officer

The subject site is relatively flat with a small rise from George Street running to the rear. It has been cleared. A gravel carpark is located immediately to the rear of 75 George Street. The proposed development site covers the carpark and vacant land behind it (Figures 5-7).



Figure 5: View of site from George Street, with heritage item I569 in the foreground



Figure 6: View looking east across site from gravel carpark behind heritage item I569



Figure 7: Rear portion of site. The building on the right of the picture is the rear of the IGA

2 Site History

2.1 Urban Context

The subject site is located within the commercial heart of Marulan on George Street, a major north-south running thoroughfare (Figures 8-13). The site is approximately 1800 square metres with the historic butcher's shop and residence located on the George Street frontage. This section of George Street consists of historic buildings and new infill commercial development



Figure 8: View looking northeast from Goulburn Street, approximate location of site marked by arrow



Figure 9: View from Thoroughfare Street, butcher's shop is green roofed building marked by arrow



Figure 10: View looking directly across George Street



Figure 11: View looking southeast from George Street



Figure 12: View into site down northern side of 75 George Street



Figure 13: View from site looking south to IGA carpark

The site is located immediately behind the locally listed Victorian shop (circa 1880) and residence (circa 1936). The rear of this block is currently vacant except for a shipping container stored in the northeastern corner. The proposed childcare centre will be orientated to face the IGA to the south with access through this carpark.

2.2 Old Marulan

The establishment of towns outside of the County of Cumberland did not gain momentum until the 1830s. This decade became an intensive period of town founding in New South Wales. Many Australian towns originated because of the need for provision of services. The essential qualities of a service town are that it serves a population outside its own boundaries and produces services for sale rather than goods.

Marulan began as one such service town in the early days of the boom period of the 1830s. Marulan was established due to Mitchell's uncertainty as to which route south would prove the most viable. Marulan was the name given to the town by Mitchell in 1829 as a simplification of the original Moorooaulin recorded by Throsby (Smith 2008). The Government Gazette of 11/04/1835 announced the fact that the location for the village had been determined.



Figure 14: General plan of roads southward from Sydney 1829. The site of Marulan was to be located in the area circled at the junction of a road to the south and another to the Yass Plains (State Records File 9/2684)



Figure 15: Plan of farms for sale near Marulan (1857) (NLA)

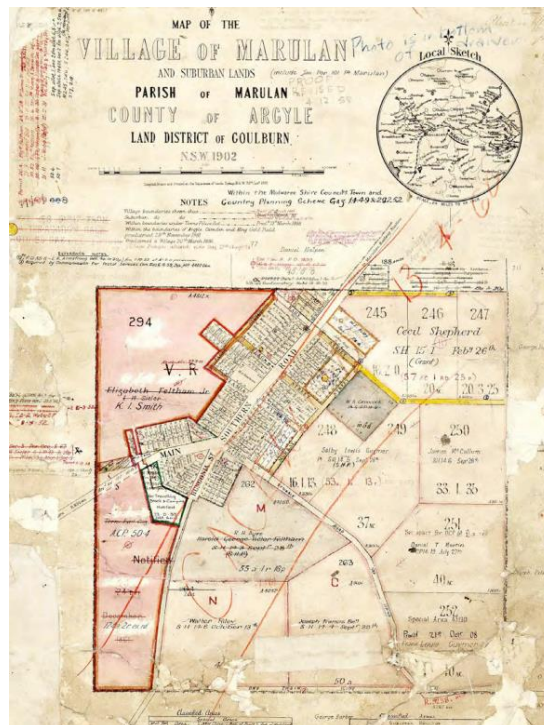


Figure 16: Village of Marulan, 1902 (HLRV)

Marulan was given a simple design with no side streets and will all allotments having frontages to the major roads. One of the first buildings in the village area was the Woolpack Inn, Built by Joseph Peters in 1835 (Banksia et. al. 2007). Confusion and concern about the future of the village plan in 1835 had prompted Peters to write to the Surveyor General referring to the fact that he had "nearly"

completed a large brick house and stable for the accommodation of the public, and would be unjustly injured if the road was realigned further. Fortunately for Peters the line of the road was not altered. (SHR).

By 1848 William Wells described Marulan as the 'second town of Argyle' (Wells 1848). Smaller than either Goulburn or Bungonia, it nonetheless outgrew the latter as Bungonia was bypassed early on (Banksia et. al. 2007).

During the late 1830s and 1840s the sale of land at Marulan continued and the original design of the village was extended. The first additional allotments merely extended the village linearly along the Great South Road, but later depth was added to the village. As the need arose for house sites, side streets were included and allotments were surveyed with frontage to these minor streets. There were however probably not as many residents as appears from the number of lots in the village as often one person owned several lots and other areas were held by absentee landholders (SHR).

2.3 Coming of the Railways

During the 1840s there was much discussion of the possibility of a southern railway either along the line of the Great South Road or through Goulburn.

The decision was finally made in favour of Goulburn. Nevertheless, for the route of the railway Marulan was an important point for it stood on the ridge which separated the valleys of the Shoalhaven and Wollondilly Rivers. This was the narrowest piece of land between the two rivers so that whatever route was chosen it had to pass in the vicinity of the village (SHR).

The political decision to so locate the railway completely changed the patterns and means of transport in that district. For Marulan specifically it meant that the village no longer had access to through traffic and had to move to the point where the two transport corridors crossed. If the village had refused to move it is most probable that a completely new settlement would have been founded near the railway.

John Morrice the owner of the property 'Glenrock' took advantage of the railway's construction by subdividing the land fronting the main road in the vicinity of the railway. He named this (new, private) town Moorooloolooloo, and an advertisement for the sale of lots appeared in 1867. It was about 2 miles from (old, public town) Marulan. The only real interest was shown by those who operated businesses at Marulan. The Marulan Postmaster and storekeeper, John O'Neill erected new premises at Moorooloolooloo and the Moorooloolooloo post office operated after February 1868. The inns at the old town were closed, also relocating near the railway (Forsyth 1989).

An article in the *Sydney Morning Herald* of 12 May, 1868, described the impact of the railway.

"The railway crosses the main road at right angles to the little township of Moorooloolooloo. Marulan is a curiosity in townships. At one time it was a thriving and busy place, but now the buildings are going to decay, and there seems little prospect of improvement."

As people moved northwards to become part of the 'new town' Marulan's population plummeted. Lots were sold, buildings demolished and eventually all that remained of the old town of Marulan was farmland and archaeological remains (Banksia et. al. 2007).

2.4 The Site

There is little evidence to support any substantial development on the site prior to the coming of the railway in 1868.

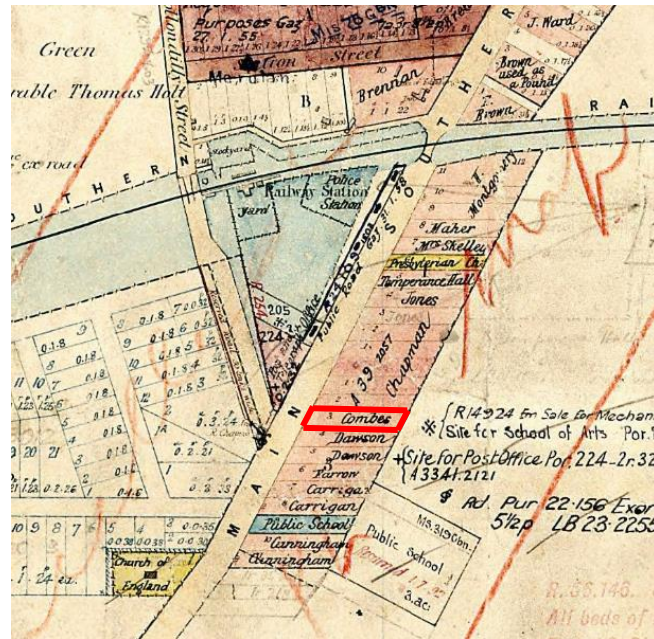


Figure 17: 1888 plan of Marulan subject site outlined in red (HLRV)

Later plans do not provide any greater detail of the subject site. The earliest identified use of the subject site is that of a slab hut used as a butcher's shop by Granny Feltham (Eddy 2000). Although the exact date of construction of the current building is not known, it is generally accepted that it was placed by 1880 (Eddy 2000; Sue Rosen Associates and BRS 2018).



Figure 18: 1910 picture of Feltham and Sons Marulan Butchery (NLA)

The federation style house to the north of this building is not yet extant. Information held by Goulburn Council suggests this structure was built in the 1930s.



Figure 19: Photograph showing addition of 1930s residence

Photographic evidence suggests that the rear of the site had remained relatively undisturbed until construction of the IGA in 2018 (Figure 20).



Figure 20: Google Earth image from 2018 showing extensive disturbance of the site during construction of the IGA

3 Legislation

3.1 Commonwealth Heritage Controls

3.1.1 EPBC Act

Under Part 9 of the Environment Protection and Biodiversity Conservation Act 1999 (EPBC Act), any action likely to have a significant impact on matters of national environmental significance may only progress with approval of the responsible Commonwealth Minister of the Department of Environment.

3.2 State Heritage Controls

3.2.1 Heritage Act 1977

An application under Section 60 of the Act is required in order to carry out activities on an item listed on the State Heritage Register (SHR) or to which an interim heritage order (IHO) applies. Approval must be gained from the Heritage Council when making changes to these heritage items.

Standard Exemptions apply for all items on the State Heritage Register. Typical activities that are exempted include building maintenance, minor repairs, alterations to certain interiors or areas and change of use.

The *NSW Heritage Act 1977* also affords automatic statutory protection to relics that form archaeological deposits or part thereof. The Act defines relics as:

- Relic means any deposit, artefact, object or material evidence that
- (a) relates to the settlement of the area that comprises New South Wales, not being Aboriginal settlement, and
 - (b) is of State or local heritage significance.

Sections 139 to 145 of the Act prevent the excavation or disturbance of land for the purpose of discovering, exposing or moving a relic, except by a qualified archaeologist to whom an excavation permit has been issued by the Heritage Council of NSW.

3.2.2 National Parks and Wildlife Act 1974

The *National Parks and Wildlife Act 1974* (as amended) affords protection to all Aboriginal objects and is governed by the NSW, Office of Environment and Heritage. These objects are defined as:

Any deposit, object or material evidence (not being a handicraft made for sale) relating to the Aboriginal habitation of the area that comprises New South Wales, being habitation before or concurrent with (or both) the occupation of that area by persons of non-Aboriginal extraction, and includes Aboriginal remains.

It is an offence to destroy Aboriginal objects or places without the consent of the Director-General.

3.3 Local Heritage Controls

3.3.1 Goulburn Mulwarree Local Environmental Plan 2009

The aim of the LEP in relation to heritage is to conserve, protect and enhance the environmental and cultural heritage of the Goulburn Mulwarree Shire. The LEP lists items of heritage significance within the LGA and specifies conditions of development consent within heritage listed area. Clause 5.10 of the LEP states:

The consent authority must, before granting consent under this clause in respect of a heritage item or heritage conservation area, consider the effect of the proposed development on the heritage significance of the item or area concerned. This subclause applies regardless of whether a heritage management document is prepared under subclause (5) or a heritage conservation management plan is submitted under subclause (6).

3.3.2 Goulburn Mulwaree Development Control Plan 2009

The Goulburn Mulwaree Development Control Plan contains requirements for development of heritage items, within Heritage Conservation Areas or adjacent to heritage items. The general objectives in regard to heritage conservation are:

3.1.2 Objectives

To provide for the consideration of impacts on indigenous heritage and archaeology from proposed developments within the Goulburn Mulwaree Local Government Area.

3.2.3 Objectives

- 1 *To conserve and enhance the heritage significance and qualities of heritage items conservation areas and archaeological remains and relics.*
- 2 *To ensure that alterations, additions and new infill development are sympathetic, well designed and appropriate to the values of the heritage item or streetscape context in which it is located.*
- 3 *To preserve and maintain trees and other vegetation that contributes to the significance of heritage items and heritage conservation areas.*
- 4 *To ensure a thorough assessment process is applied for any proposed demolition or removal of a heritage item or building located within a heritage conservation area including the archival recording of these buildings where required.*
- 5 *To promote public awareness and education on heritage conservation.*

4 Heritage Significance

4.1 Assessing Heritage Significance

The process of assigning significance in the assessment process is outlined in the NSW Heritage Division guidelines *Assessing Heritage Significance* and the *NSW Heritage Manual*. These guidelines identify seven evaluation criteria that reflect significance categories and representativeness by which a place can be evaluated in the context of State or Local significance. These are as follows:

Criterion (a) – an item is important in the course, or pattern, of NSW’s cultural or natural history (or the cultural or natural history of the local area).

Criterion (b) – an item has strong or special association with the life or works of a person, or group of persons, of importance in NSW’s cultural or natural history (or the cultural or natural history of the local area).

Criterion (c) – an item is important in demonstrating aesthetic characteristics and/or a high degree of creative or technical achievement in NSW (or the local area).

Criterion (d) – an item has strong or special association with a particular community or cultural group in NSW (or the local area) for social, cultural or spiritual reasons.

Criterion (e) – an item has potential to yield information that will contribute to an understanding of NSW’s cultural or natural history (or the cultural or natural history of the local area).

Criterion (f) – an item possesses uncommon, rare or endangered aspects of NSW’s cultural or natural history (or the cultural or natural history of the local area).

Criterion (g) – an item is important in demonstrating the principal characteristics of a class of NSW’s cultural or natural places; or cultural or natural environments (or the cultural or natural history of the local area).

4.2 Established Heritage Significance of Items in the Vicinity of Lot 1 DP 1268661

4.2.1 Heritage Items in the Vicinity

The subject site is located immediately behind the Victorian Shop and Residence (I569) and next door to Aunty Mary’s (I568). The site of the Royal Hotel (I567) and is located directly south of the site across the new infill development (IGA) constructed in 2019. A single SHI inventory sheets exist for items I567 and I568 (Appendix A). There is no SHI sheet for the butcher’s shop information for this item has been provided by Goulburn Mulwaree Council Heritage Officer.



Figure 21: Map showing Heritage Items I567, I568 and I569 and their relationship to the subject site (outlined in red)

4.2.2 Royal Hotel (I567)

The Royal Hotel is an imposing two-storey late Victorian building (c.1878). The hotel is an important corner building in the town, with aesthetic appeal and is highly significant for its contribution to the heritage streetscape. The grounds of the hotel have considerable archaeological potential in the location of outbuildings, stables, coach house and blacksmith shop.

4.2.3 Aunty May's/Mary's (I568)

This commercial building is known from a photograph dated to 1880. It makes a significant contribution to the George Street streetscape and has links to a number of former residents in the area.

4.2.4 Victorian Shop and Residence (I569)

The Victorian style shop (1880) and attached residence (1936) are of local heritage significance for their representative and architectural streetscape values. The shop originally had a bakehouse at the rear of the premises

5 Proposal

Lot 1 DP 1268661 consists of the existing IGA supermarket and the vacant land to the rear of butcher shop and residence (Figure 22).



Figure 22: Lot 1 DP 1268661 (SIX Viewer LPI)

The proposal consists of the construction of a new child care centre to the north of the site immediately behind the butcher's shop and residence. Copies of project plans are found in Appendix B. The new development will consist of masonry building with Colorbond roof and external landscaping and play areas (Figures 23-25).

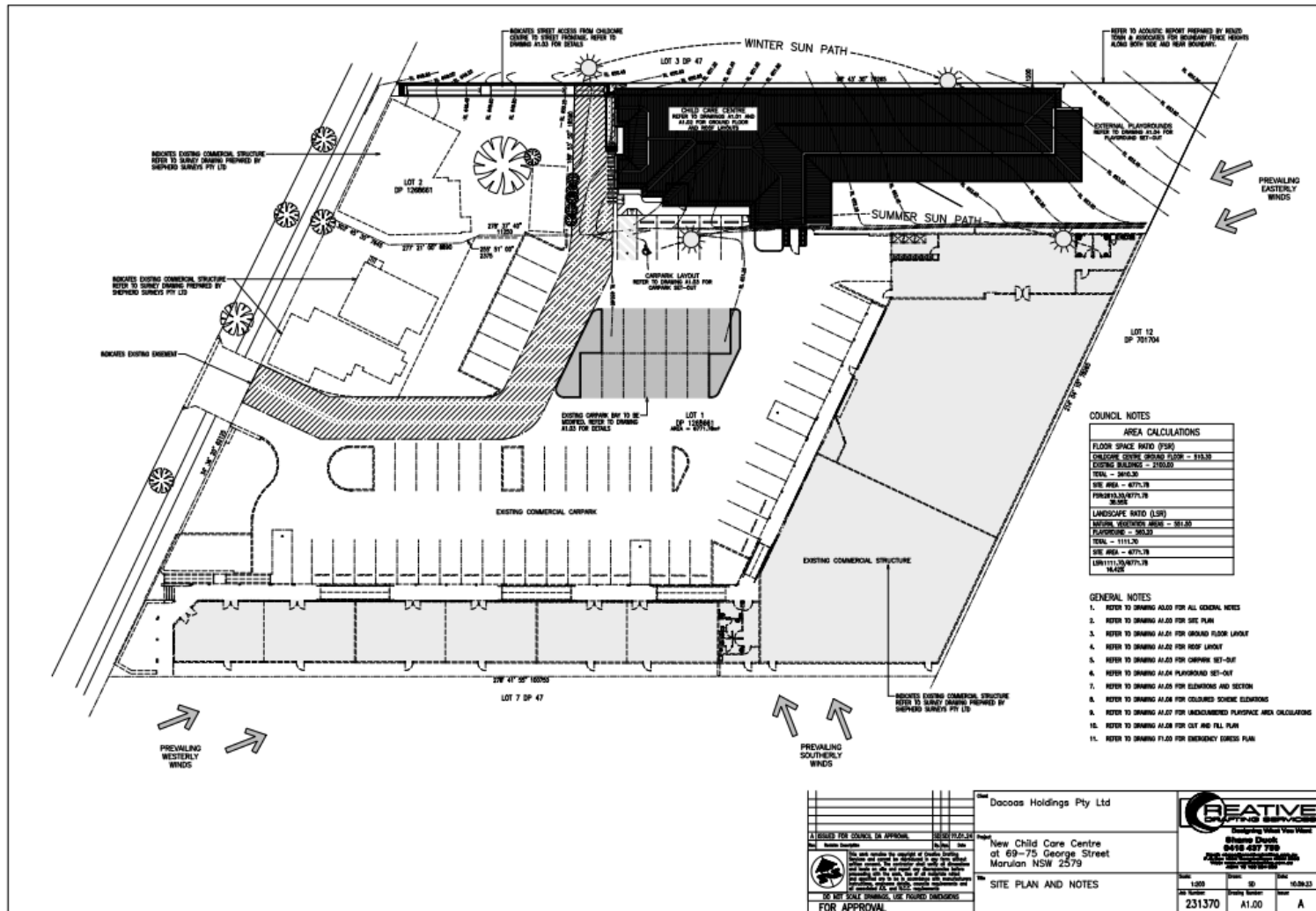


Figure 23: Proposed site plan

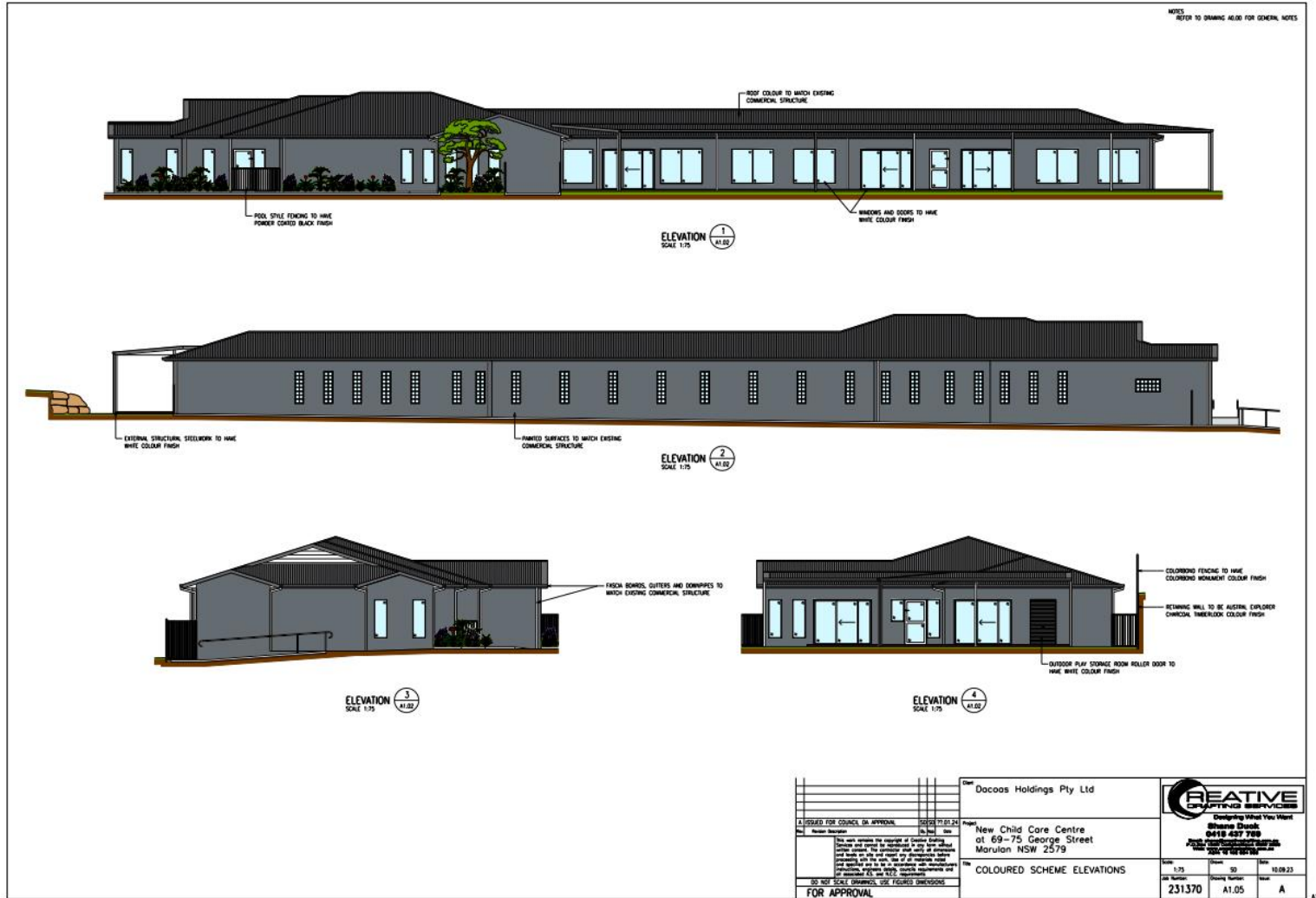


Figure 24: Proposed elevation

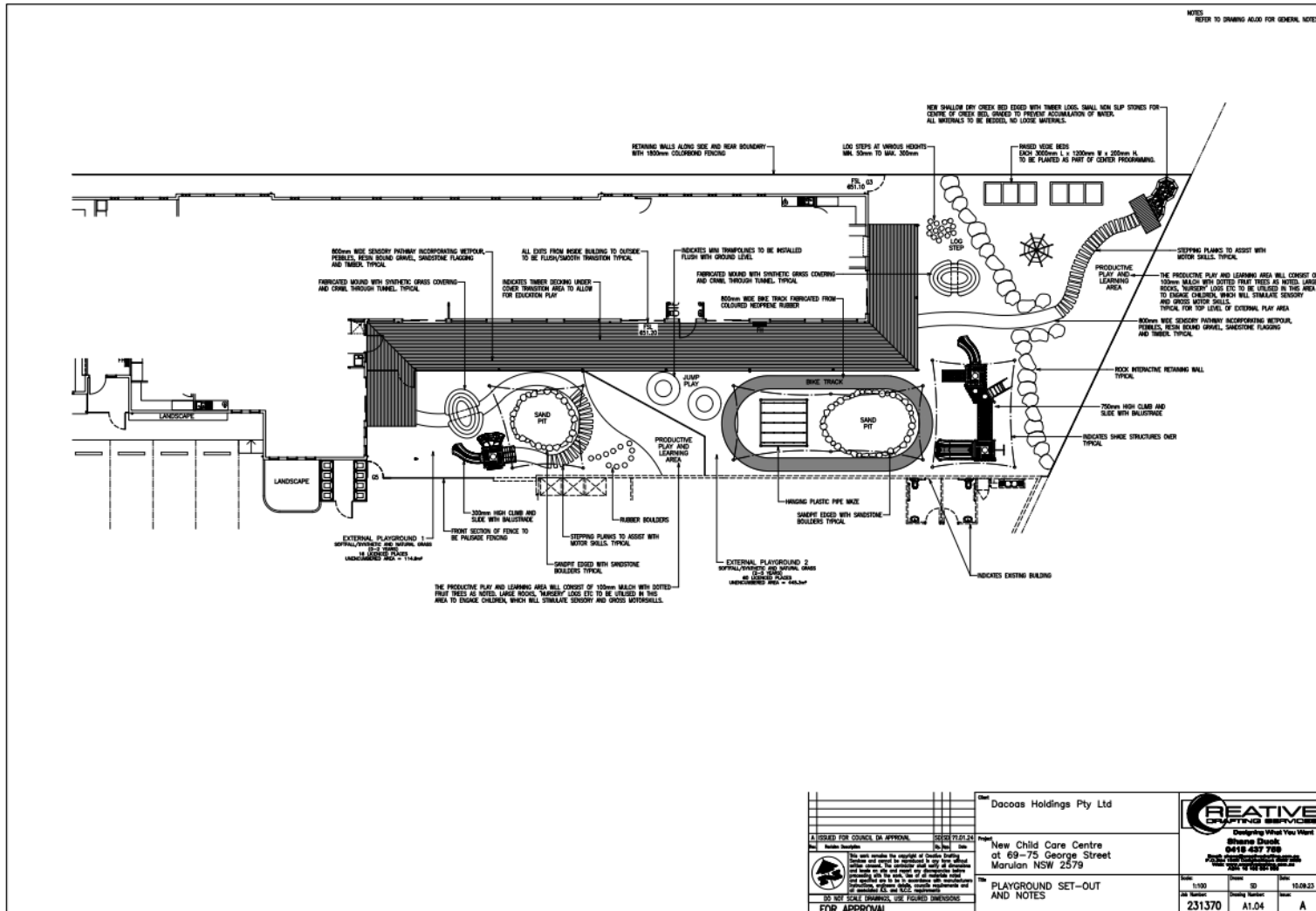


Figure 25: Proposed playground set out

6 Assessments of Impacts

6.1 Assessment against heritage controls

6.1.1 EPBC Act 1999

The site does not have national environmental significance and is not listed under the EPBC Act; as such there are no obligations under the EPBC Act 1999.

6.1.2 Heritage Act 1977

The site is not listed on the State Heritage Register as such no approval for these works is required from the Heritage Council of NSW.

6.1.3 National Parks and Wildlife Act 1974

There are no obligations under the *National Parks and Wildlife Act 1974*.

6.1.4 Goulburn Mulwaree Local Environmental Plan 2009

Royal Hotel

The Royal Hotel is a significant streetscape element in George Street. The construction of the IGA in 2009 has removed any visual connection from the subject site to the Royal Hotel (Figure 26). The proposed development will not impact the heritage values of the Royal Hotel.



Figure 26: View form site towards royal Hotel. Note line of infill development has removed any visual connection

Aunty May's/Mary's

The new IGA has created a high level of visual impact to the rear of this heritage item. The subject site is not readily visible from the street at this point. The new development will be set back and will not impact the streetscape as it relates to this item.

Victorian Shop and Residence

The proposed development will be located in the lot behind this heritage item. Views from the street of the new development will be masked by the existing heritage item. The IGA development that has occurred across the majority of the site has introduced new elements that sustainably impact the appreciate of the Victorian streetscape.

There are some views of the subject site from George Street to the north of I569 between that and new development at 77-79 George Street (Figure 27). The new development will have a minor visual impact but it must be considered in the context of the IGA development that is a highly visible new element.



Figure 27: View from George Street showing site of proposed development. New development at 77-79 George Street to left of picture

The new development will not have any major or adverse impact on the streetscape as it relates to this item.

6.1.5 Goulburn Mulwaree Development Control Plan 2009

The objective of section 3.1.2 of the DCP is to:

To provide for the consideration of impacts on indigenous heritage and archaeology from proposed developments within the Goulburn Mulwaree Local Government Area.

The Goulburn Mulwaree Archaeological Management Plan identifies sites dating up to 1860 as having high archaeological significance. The current township of Marulan predates this cut-off point by 8 years. A literature review of the archaeological reports for Marulan have not identified any archaeological potential associated with the proposed development site.

The site was pastoral land until the relocation of the town to follow the railway in 1868. The lack of previously identified development on the site and low impact use associated with its pastoral origins make the likelihood of potential archaeology low. This is further impacted by the level of ground impact associated with the construction of the IGA on the site (Figure 28).



Figure 28: Google Earth image from 2018 showing extensive disturbance of the site during construction of the LGA

The Goulburn Mulwaree LGA Aboriginal Heritage Study (2012) identifies the area around Marulan as having the potential for Aboriginal artefacts (Figure 29).

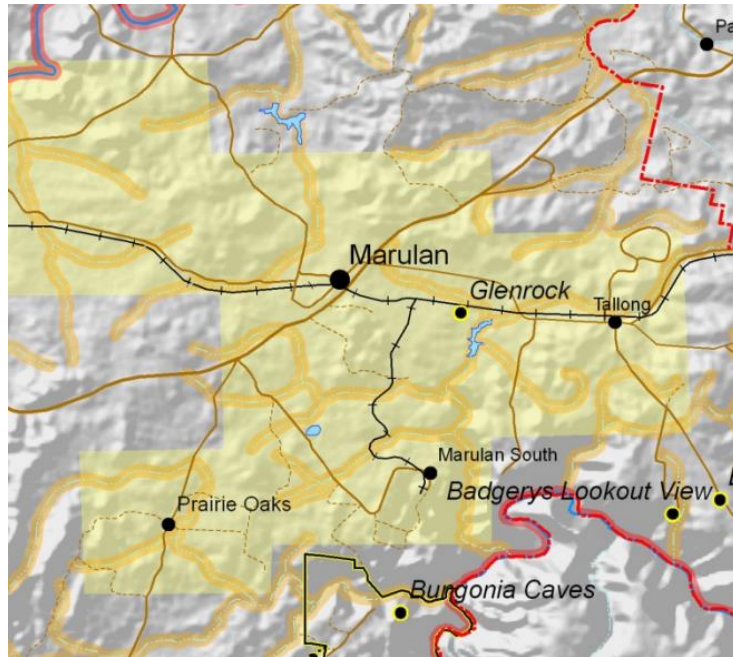


Figure 29: Area of potential for Aboriginal artefacts (shaded yellow) from Goulburn Mulwaree LGA Aboriginal Heritage Study. This study does not identify the area of Marulan as having high or moderate sensitivity

An AHIMS database search was undertaken for the site on 7 March 2024 (Appendix C). This search showed no Aboriginal sites or objects within the study area or around it.

The extent of development within Marulan and recent land disturbance associated with the construction of the IGA suggests that there is little likelihood of disturbing Aboriginal relics as part of this proposal.

Objectives 1 and 2 of Section 3.2.3 of the DCP is to:

To conserve and enhance the heritage significance and qualities of heritage items conservation areas and archaeological remains and relics.

To ensure that alterations, additions and new infill development are sympathetic, well designed and appropriate to the values of the heritage item or streetscape context in which it is located.

The proposed new development will be set behind an existing structure which will limit the visual impacts of the new development from George Street. The existing streetscape qualities of George Street have already been impacted by the IGA development and newer structures to the north of 1569. Although there will be some visual impacts these will not adversely impact the existing heritage streetscape.

The new development will be located on the lot behind 1569 and thus separated from it. There is unlikely to be any impact on this site or any features associated with the use of the site (butchery/bakery).

6.2 Goulburn Mulwaree Council Concerns

Goulburn Mulwaree Council raised specific concerns around heritage in relation to this development with the applicant in a pre-DA meeting. These concerns with responses (in bold) are addressed below.

- The design must address its impact when views from George Street and limit its impact on the heritage items I568 and I569, being 73 George Street, a Victorian shop “Aunty Mary’s circa 1880 and 75 George Street, a Victorian shop circa 1880 and residence circa 1936.

The proposed new development will not physically impact heritage items I568 and I569. It will be located in a separate lot behind item I569. The existing heritage structures and levels of new development around the site means that the visual impacts from George Street will be minor and will not adversely affect the identified heritage values.

6.3 Assessment of Heritage Significance

The subject site is located within adjacent to two locally listed heritage item.

The area has undergone extensive development in the recent past and currently consists of a mixture of heritage items and new infill development. The new structure will be set back from George Street behind existing structures. The proposed development will not have detrimental visual impact on character of George Street, nor will it introduce an architectural form that has not already been introduced to the area.

There have been no significant views identified associated with the site or the adjacent heritage items. The past land use and disturbance associated with new development means that there is little likelihood of disturbing either historical or Aboriginal archaeological relics or objects.

The following aspects of the proposal respect or enhance the heritage significance of the item

The introduction of the new development will not enhance the heritage significance of the item.

The following aspects of the proposal could detrimentally impact on the heritage significance

Although there will be views of the new building from the George Street these will not impact the heritage significance of this site. There will be no physical impact on the heritage items adjacent to the site.

7 Summary and Recommendations

It is assessed that the proposed commercial development of the site at Lot 1 DP 1268661 is unlikely to have an adverse impact upon the cultural heritage values of the place.

The subject site is adjacent to the locally listed heritage items.

The proposed development is unlikely to have an impact on the identified significance of these items or an impact on the Victorian streetscape that has been recognised as important. There may be some minor visual impacts when viewed from George Street, but will not impact the significance of the area.

If Goulburn Mulwaree Council issues a Development Consent for the proposal described in this assessment conditions of consent similar to the following should be included:

- Should any Aboriginal 'objects' be uncovered by the work, excavation or disturbance of the area is to stop immediately and the Office of Environment & Heritage is to be informed in accordance with Section 89A of the National Parks and Wildlife Act, 1974 (as amended). Works affecting Aboriginal 'objects' on the site must not continue until the Office of Environment and Heritage has been informed. Aboriginal 'objects' must be managed in accordance with the National Parks and Wildlife Act, 1974.
- The Applicant must ensure that if unexpected archaeological deposits or relics are discovered, work must cease in the affected area(s) and the Heritage Council of NSW must be notified. Additional assessment and approval may be required prior to works continuing in the affected area(s) based on the nature of the discovery.

8 References

- AMBS (2012): *Goulburn Mulwaree LGA Aboriginal Heritage Study*. Report prepared for Goulburn Mulwaree Council.
- Bailliere (1870): *Bailliere's New south Wales Gazetteer and road guide for 1870*. Sydney.
- Banksia, Umwelt and Holcim (2007): *Old Marulan Archaeological Investigations Final Report, Volume 2*. Unpublished Report.
- Eddy, M. (2000): *Marulan: A unique Heritage*. Marulan 150 Committee Marulan.
- Forsyth, J.H. (1989): *Stations and Tracks: V2: Main Southern Line*. Sydney
- Higginbotham and Associates (2009): *Goulburn Mulwaree Archaeological Management Plan, Volumes 1-3*. Report prepared for Goulburn Mulwaree Council.
- Jervis, J. (1986): 'Settlement in the Marulan-Bungonia District', *Journal of the RAHS* **32:107-142**.
- MTBA (2007): "Moorooloolen and John Morrice, its founder", *Marulan and Districts Review* **3(3)**.
- Smith, J. (2008): *Gundungurra Country*. Unpublished PhD Theses, Macquarie University.
- Sue Rosen Associates and BRS (2018): *Goulburn Mulwaree Council Heritage Study Review*. Report prepared for Goulburn Mulwaree Council.
- Wells, W.H. (1848): *A Geographical Dictionary or Gazetteer of the Australian Colonies*. Sydney
- State Heritage Inventory:
 - <https://www.hms.heritage.nsw.gov.au/App/Item/ViewItem?itemId=2935981>

Appendix A

Item Details

Name

Royal Hotel (C 1878), Aunty Mary's, Shop, (C 1880)

SHR/LEP/S170

LEP #I320

Address

73 - 75 George Street MARULAN NSW 2579

Local Govt Area

Goulburn Mulwaree

Local Aboriginal Land Council

Unknown

Item Type

Built

Group/Collection

Commercial

Category

Other - Commercial

All Addresses

Addresses

Records Retrieved: 1

Street No	Street Name	Suburb/Town/Postcode	Local Govt. Area	LALC	Parish	County	Electorate	Address Type
73 - 75	George Street	MARULAN/NSW/2579	Goulburn Mulwaree	Unknown	Marulan	Argyle	Unknown	Primary Address

Significance

Statement Of Significance

Royal Hotel - Important as a hotel for the town of Marulan in the late 1800s. Unfortunately at the turn of the century the licence was recalled along with many others and was never reissued. the hotel is an important corner building in the town, with aesthetic appeal. Aunty Marys shop has been used for a number of purposes over the years and is important in streetscape appeal, design and link to a number of former residents in the area.

Owners

Records Retrieved: 0

Organisation	Stakeholder Category	Date Ownership Updated
No Results Found		

Description

Designer

Bulder/Maker

Physical Description

Updated

Physical Condition

Updated

Modifications And Dates

Further Comments

Current Use

Former Use

Listings

Listings

Records Retrieved: 1					
Heritage Listing	Listing Title	Listing Number	Gazette Date	Gazette Number	Gazette Page
Local Environmental Plan	Goulburn Mulwaree Local Environmental Plan 2009	I320	2/20/2009 12:00:00 AM		

Procedures/Exemptions

Records Retrieved: 0

Section of Act	Description	Title	Comments	Action Date	Outcome
No Results Found					

History

Historical Notes or Provenance

Updated

Historic Themes

Records Retrieved: 0

National Theme	State Theme	Local Theme
No Results Found		

Recommended Management

Management Summary

Management

Records Retrieved: 0

Management Category	Management Name	Date Updated
No Results Found		

Report/Study

Heritage Studies

Records Retrieved: 0

Report/Study Name	Report/Study Code	Report/Study Type	Report/Study Year	Organisation	Author
No Results Found					

Reference & Internet Links

References

Records Retrieved: 0

Type	Author	Year	Title	Link
No Results Found				

Data Source

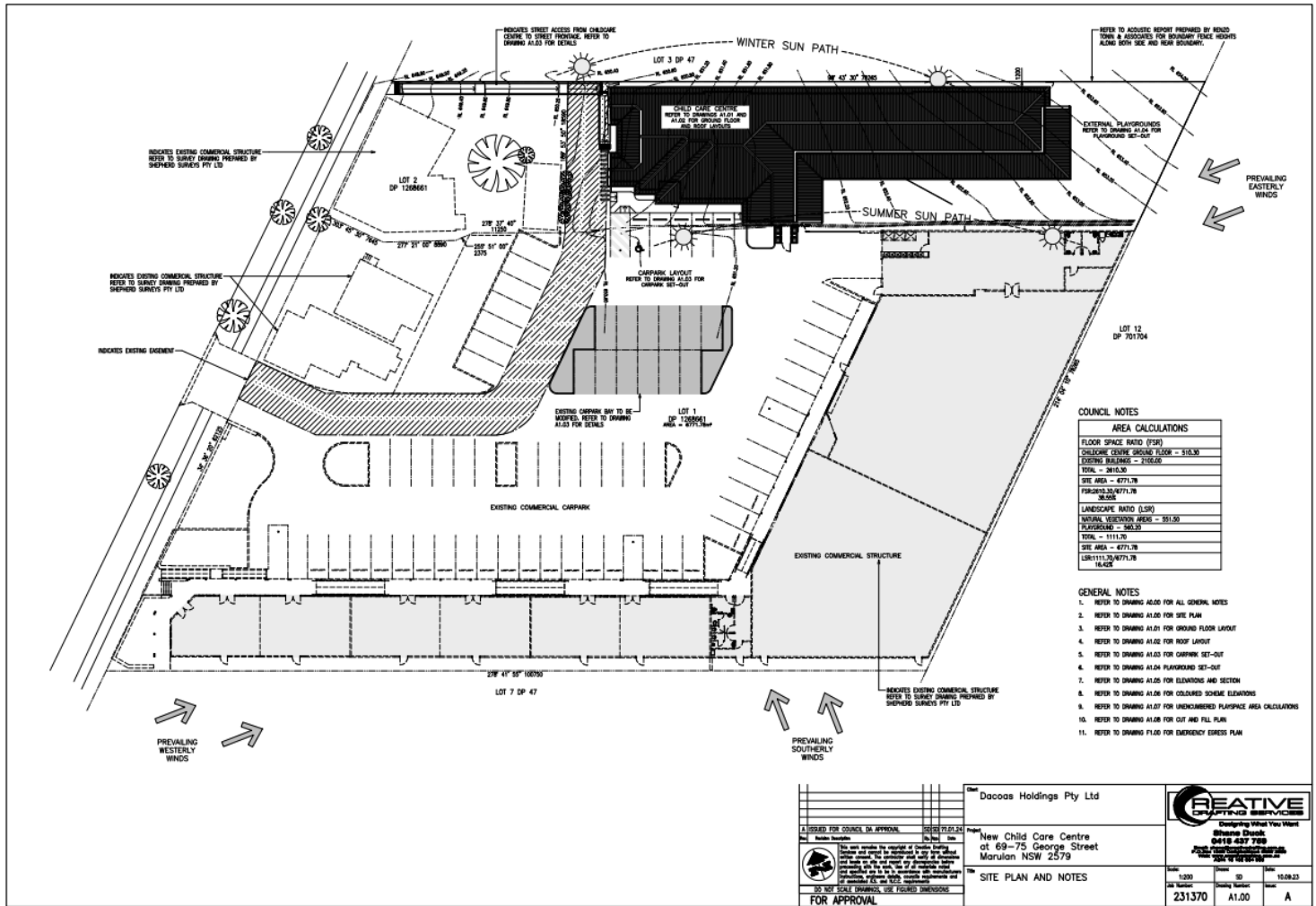
The information for this entry comes from the following source:

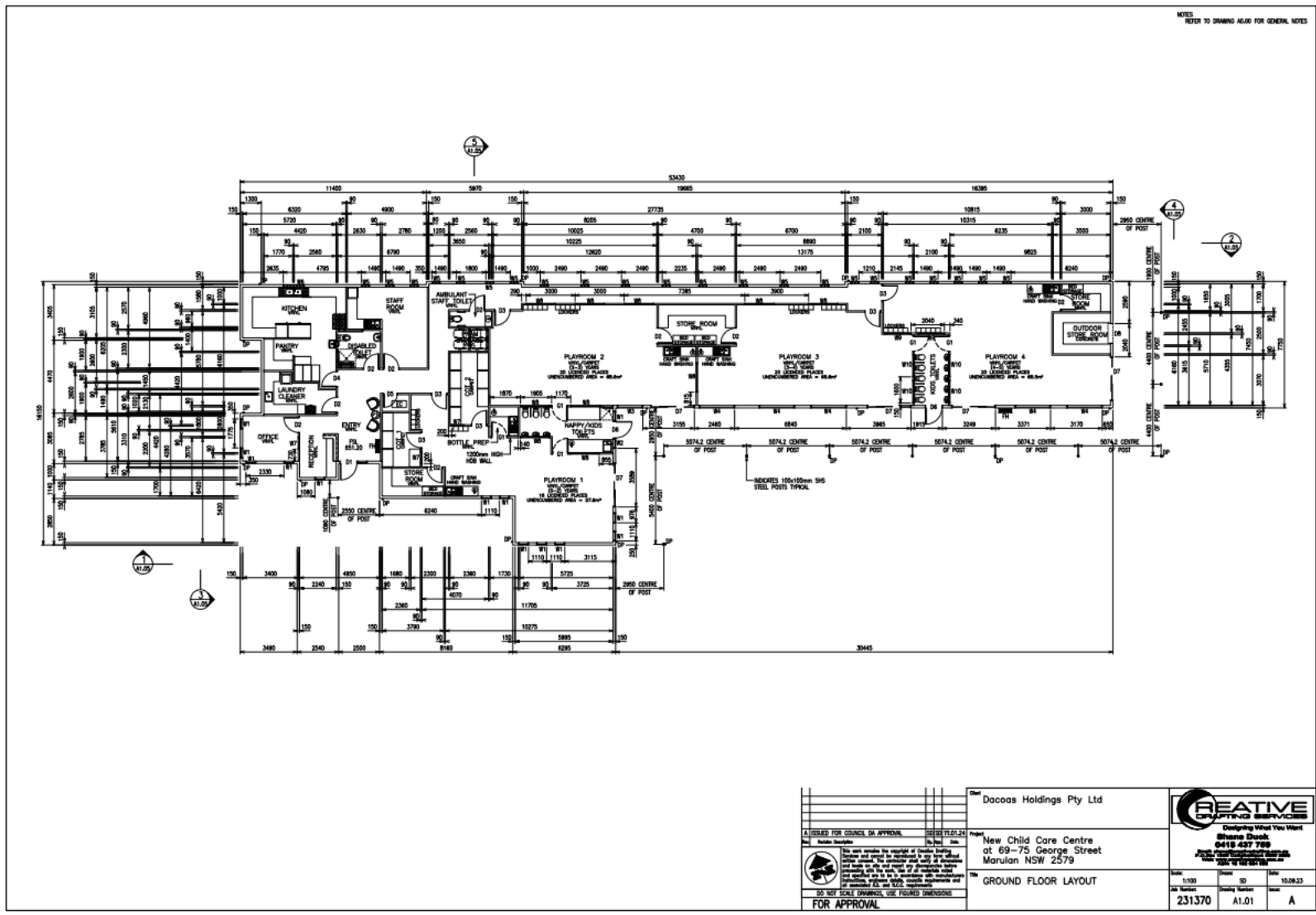
Data Source	Record Owner	Heritage Item ID
Local Government	Goulburn Mulwaree Council	2935981

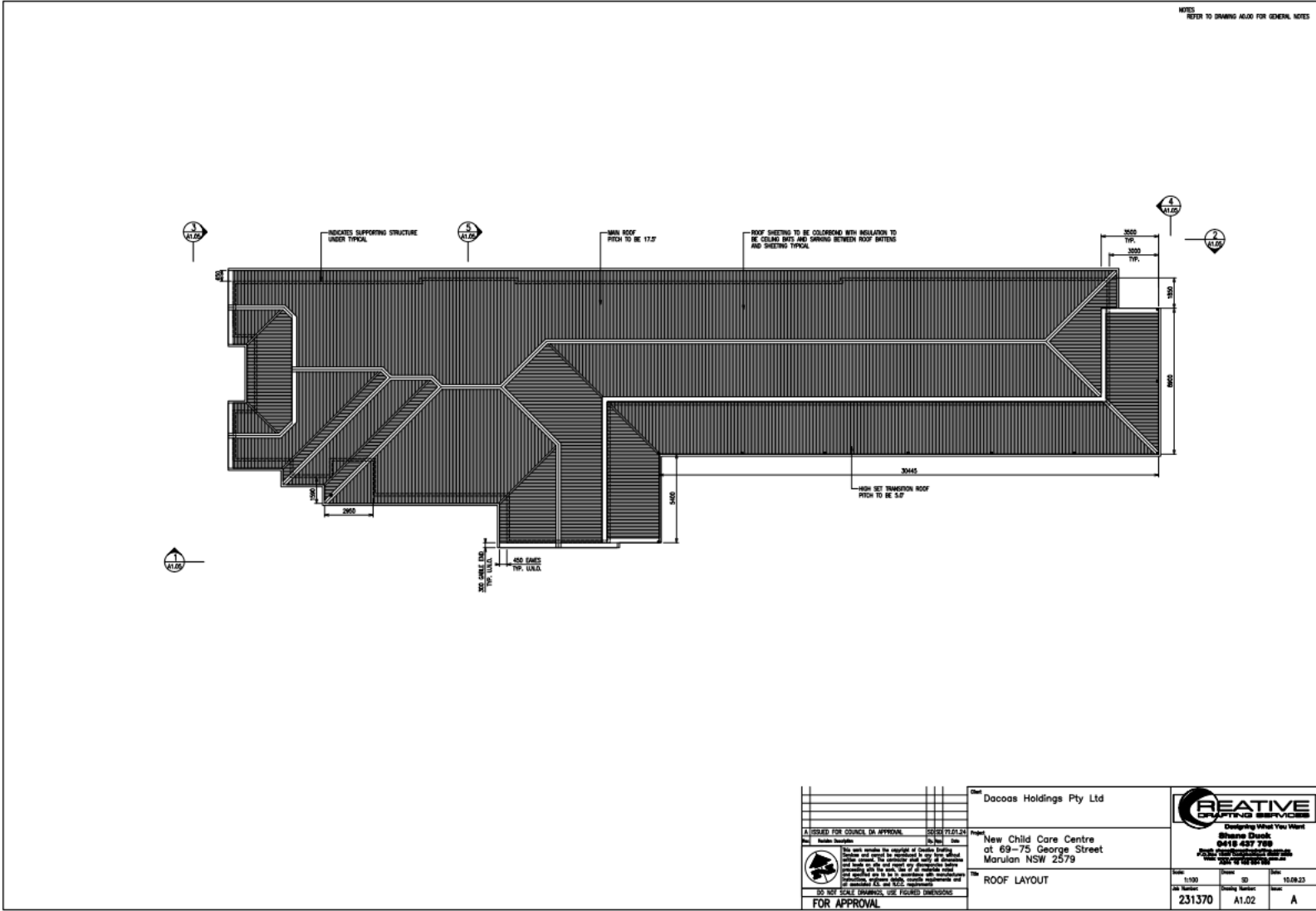
Every effort has been made to ensure that information contained in the State Heritage Inventory is correct. If you find any errors or omissions please send your comments to council@goulburn.nsw.gov.au

All information and pictures on this page are the copyright of the Heritage Division or respective copyright owners.

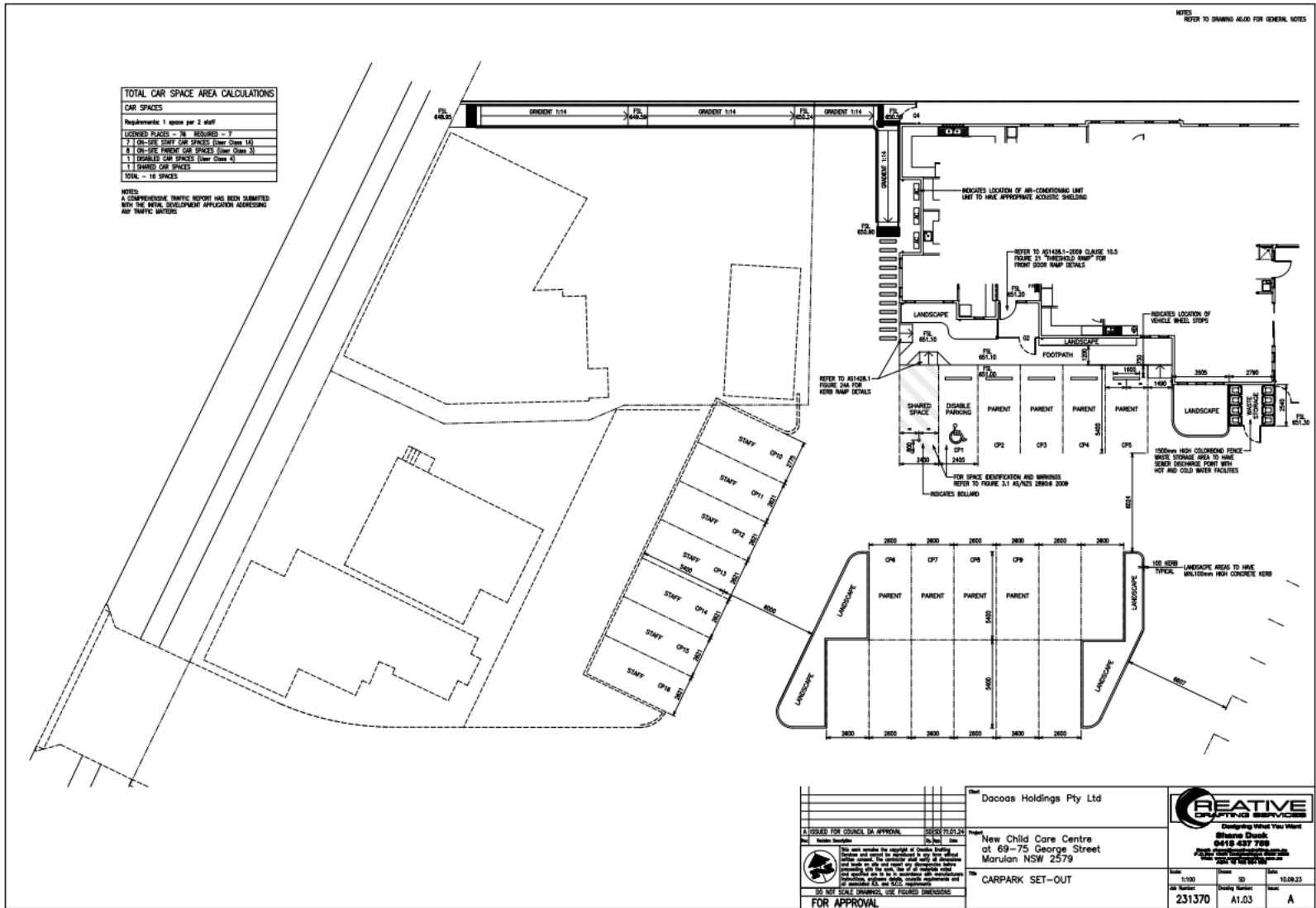
Appendix B



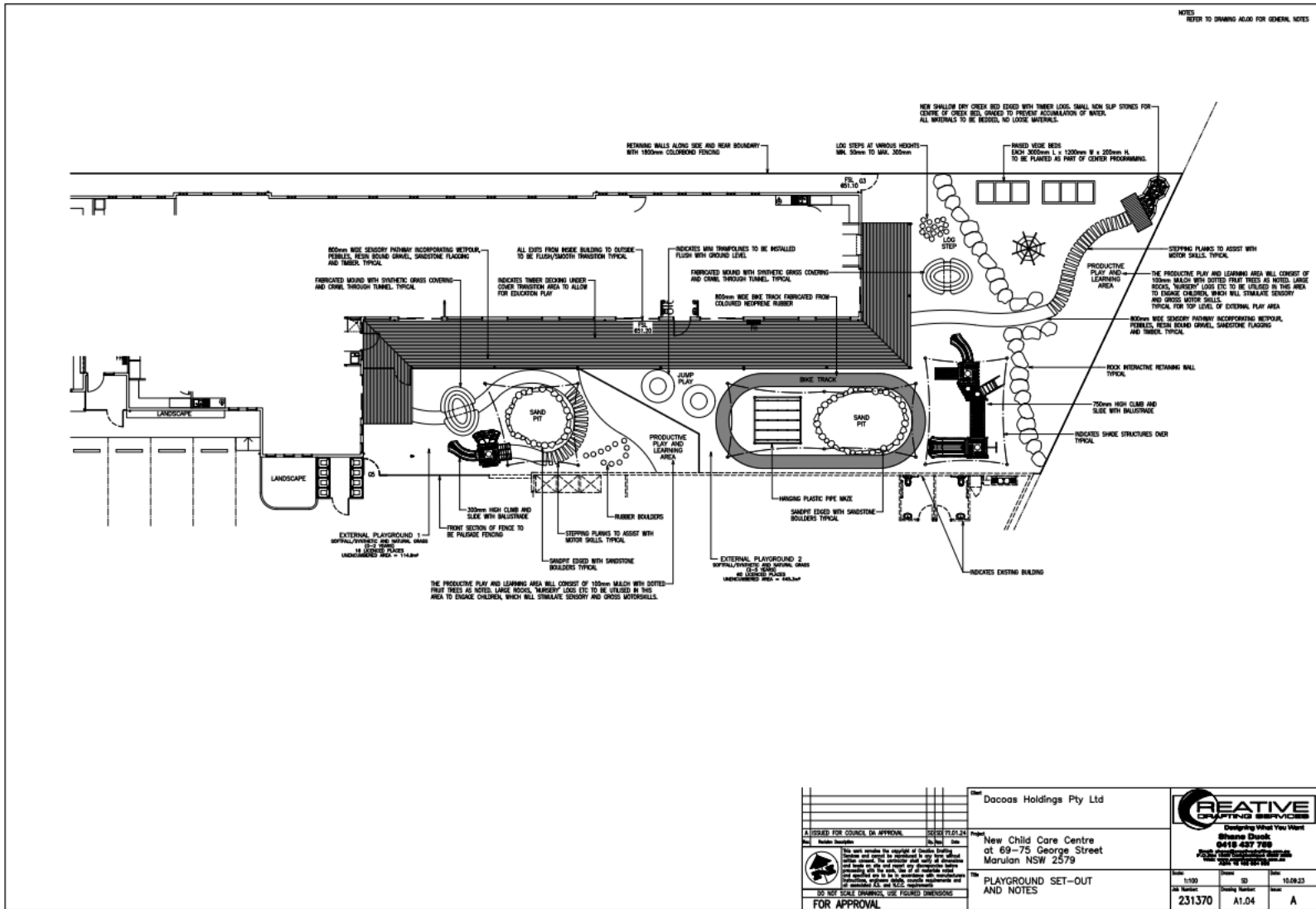


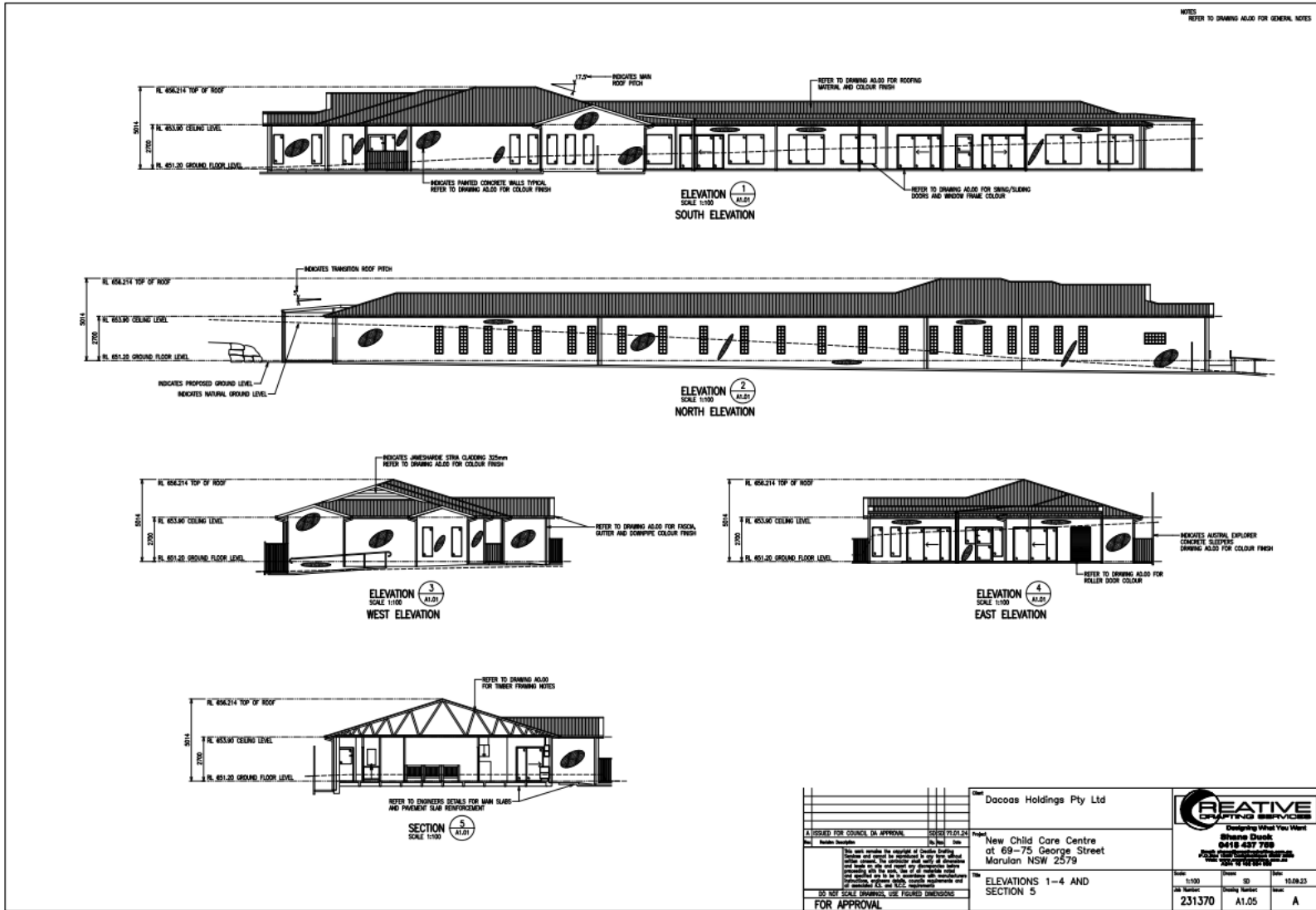


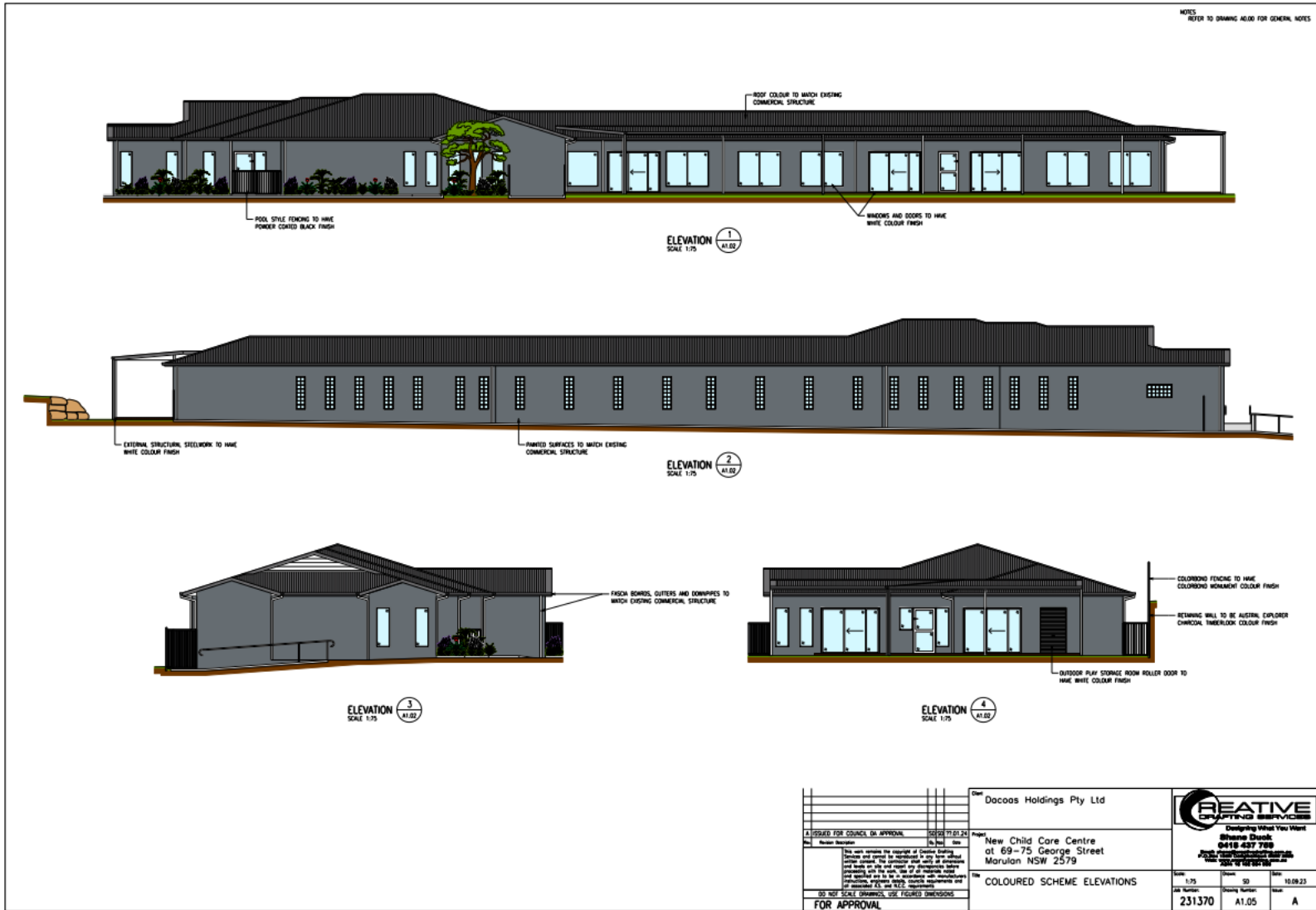
<p>FOR APPROVAL</p> <p>DO NOT SCALE DIMENSIONS, USE FIGURED DIMENSIONS</p> <p>FOR APPROVAL</p>		<p>Client: Dacoas Holdings Pty Ltd</p> <p>Project: New Child Care Centre at 69-75 George Street Marulan NSW 2579</p> <p>Title: ROOF LAYOUT</p>	<p>CREATIVE</p> <p>Designing What You Want</p> <p>Shane Duck 0410 437 700 100-110 George Street Marulan NSW 2579</p>
<p>Scale: 1:100</p> <p>Issue: 10.08.23</p> <p>Drawn: A1.02</p> <p>Checked: A</p>	<p>Sheet Number: 231370</p> <p>Sheet Title: A1.02</p> <p>Sheet Code: A</p>		

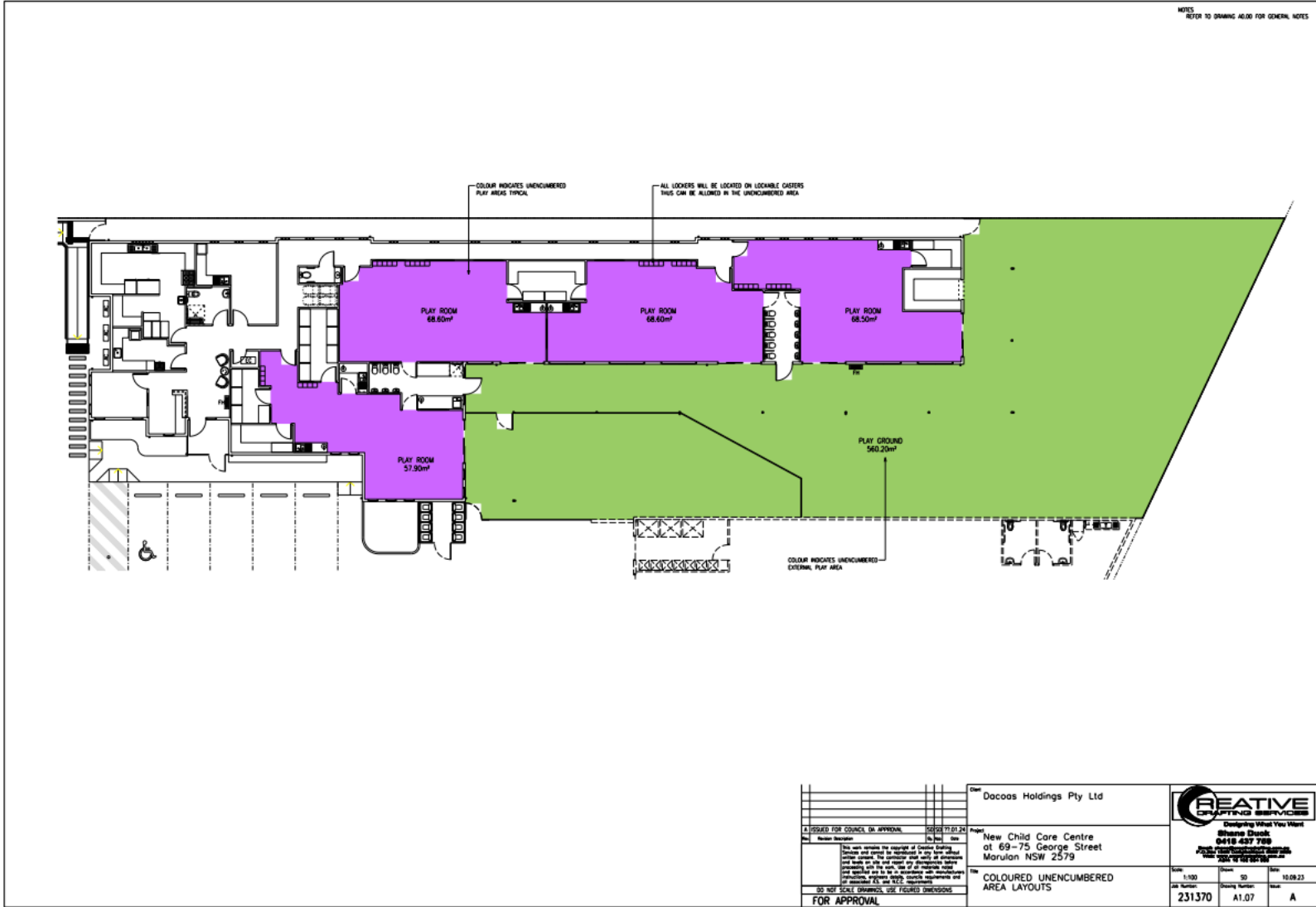


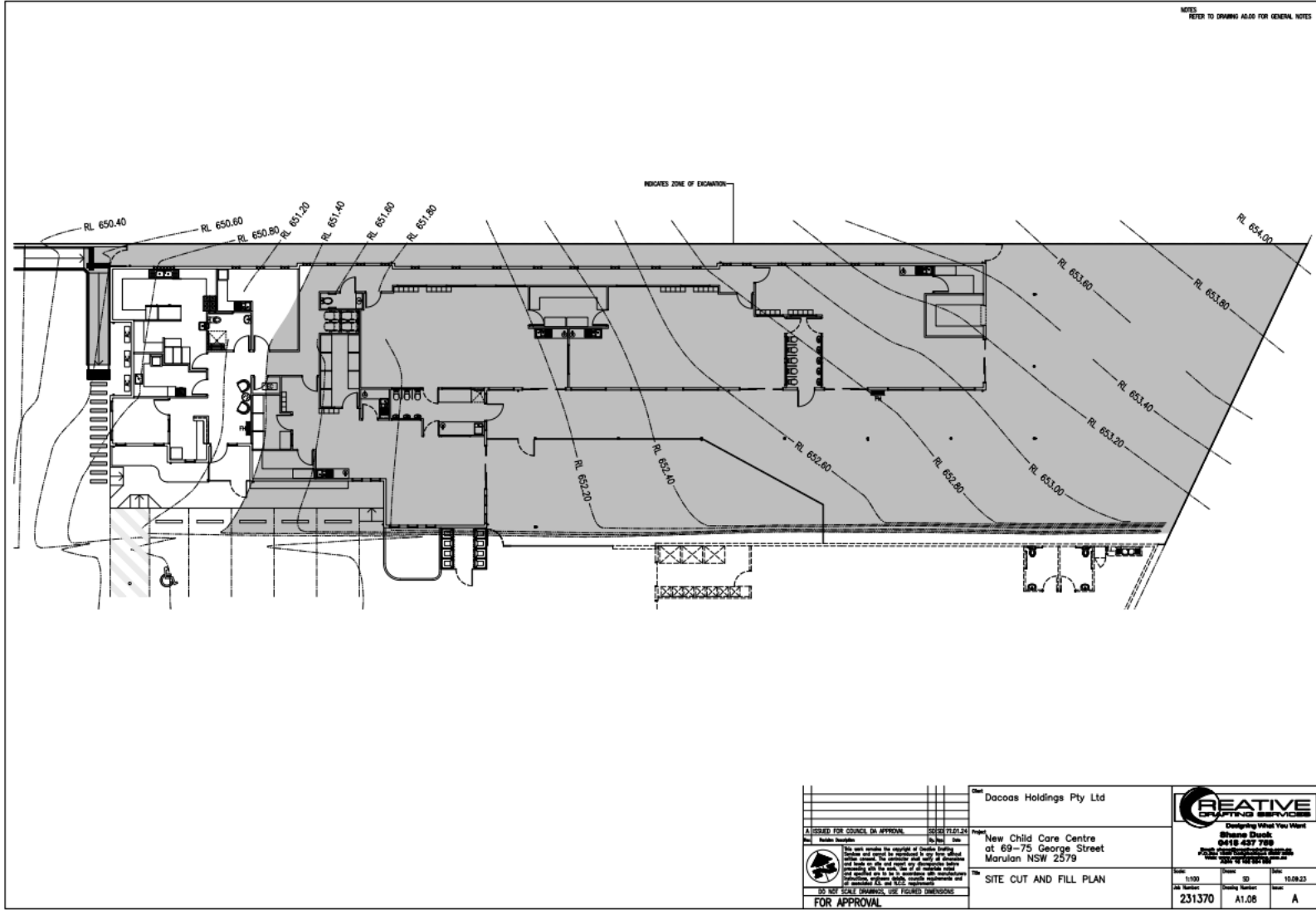
Issued For Council In Approval Date: 15/09/23 Scale: 1:100 Project: 231370 Drawing Number: A1.03 Date: 15/09/23 Name: A		Client: Dacoos Holdings Pty Ltd Project: New Child Care Centre at 69-75 George Street Marulan NSW 2579 Title: CARPARK SET-OUT	 Consulting Surveyors Shane Duck 0418 437 788 100/102 Macquarie Street Sydney NSW 2000
---	--	---	---











Appendix C



AHIMS Web Services (AWS) Search Result

Your Ref/PO Number : Marulan
Client Service ID : 870877

Gary Estcourt
103 Kerrs Road
Mount Vernon New South Wales 2178
Attention: Gary Estcourt
Email: gary@bcnheritage.com.au
Dear Sir or Madam:

Date: 07 March 2024

AHIMS Web Service search for the following area at Lat, Long From : -34.7168, 149.9981 - Lat, Long To : -34.708, 150.0136, conducted by Gary Estcourt on 07 March 2024.

The context area of your search is shown in the map below. Please note that the map does not accurately display the exact boundaries of the search as defined in the paragraph above. The map is to be used for general reference purposes only.



A search of Heritage NSW AHIMS Web Services (Aboriginal Heritage Information Management System) has shown that:

0	Aboriginal sites are recorded in or near the above location.
0	Aboriginal places have been declared in or near the above location. *

If your search shows Aboriginal sites or places what should you do?

- You must do an extensive search if AHIMS has shown that there are Aboriginal sites or places recorded in the search area.
- If you are checking AHIMS as a part of your due diligence, refer to the next steps of the Due Diligence Code of practice.
- You can get further information about Aboriginal places by looking at the gazettal notice that declared it. Aboriginal places gazetted after 2001 are available on the [NSW Government Gazette \(https://www.legislation.nsw.gov.au/gazette\)](https://www.legislation.nsw.gov.au/gazette) website. Gazettal notices published prior to 2001 can be obtained from Heritage NSW upon request

Important information about your AHIMS search

- The information derived from the AHIMS search is only to be used for the purpose for which it was requested. It is not to be made available to the public.
- AHIMS records information about Aboriginal sites that have been provided to Heritage NSW and Aboriginal places that have been declared by the Minister;
- Information recorded on AHIMS may vary in its accuracy and may not be up to date. Location details are recorded as grid references and it is important to note that there may be errors or omissions in these recordings,

- Some parts of New South Wales have not been investigated in detail and there may be fewer records of Aboriginal sites in those areas. These areas may contain Aboriginal sites which are not recorded on AHIMS.
- Aboriginal objects are protected under the National Parks and Wildlife Act 1974 even if they are not recorded as a site on AHIMS.
- This search can form part of your due diligence and remains valid for 12 months.

Level 6, 10 Valentine Ave, Parramatta 2150
Locked Bag 5020 Parramatta NSW 2124
Tel: (02) 9585 6345

ABN 34 945 244 274
Email: ahims@environment.nsw.gov.au
Web: www.heritage.nsw.gov.au